

Har Har Mahadev

KEDARNATH DHAM YATRA

5 NIGHTS/6 DAYS GROUP DEPARTURE FROM DELHI



Kedarnath Temple

Why Kedarnath Temple?

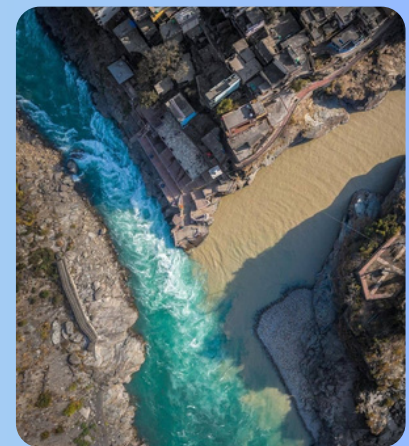
Spiritual Significance Kedarnath is one of the holiest shrines dedicated to Lord Shiva and is part of the sacred Char Dham Yatra. Pilgrims believe visiting this temple helps attain spiritual peace and liberation (moksha).



Haridwar

Popular Places to Visit

- Kedarnath Temple
- Aarti at Ghats of Haridwar
- Bath at the Gushing Kempty Falls of Mussoorie
- Confluence of Alaknanda and Bhagirathi at Devprayag.



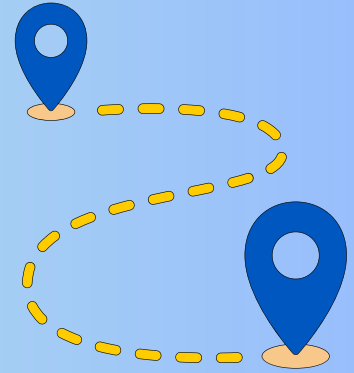
Devprayag Sangam



Hotel Accommodation



Meals



Transfers

GROUP DEPARTURE 2026	
<i>Hotel Type</i>	<i>Hotel + Camp</i>
<i>Room Sharing</i>	<i>Double/Triple/Quad</i>
<i>Meal Plan</i>	<i>Breakfast + Dinner</i>
<i>Start Point</i>	<i>Akshardham Metro (Delhi)</i>
<i>End Point</i>	<i>Akshardham Metro (Delhi)</i>

Day-wise Itinerary

Day 1: Delhi – Haridwar (222 KM: 6 - 7 HRS)

Pick up from Akshardham metro station gate No. 1 (Timing will be updated after confirming the itinerary) & Later drive to Haridwar. Evening, Har Ki Pauri for Ganga Aarti then dinner and overnight stay at Haridwar



Dinner | Stay



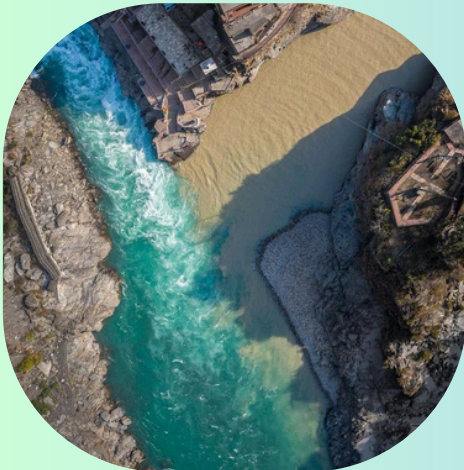
Ganga Aarti Haridwar

Day 2 : Haridwar to Guptkashi (210-220 KM: 7 - 9 HRS)

Drive to Guptkashi, en route visiting Devprayag (the confluence of the Bhagirathi and Alaknanda rivers). Upon arrival, check in at the hotel.



Breakfast + Dinner | Stay



Devprayag Sangam

Day 3: Guptkashi - Sonprayag - Gaurikund - Kedarnath

Check out from the hotel and drive to Gaurikund. En route, visit Sonprayag to witness the confluence of the Ganga and Mandakini rivers. From here, begin your 16 km trek to Kedarnath and arrive by evening.

Check in at the camps and proceed for temple darshan. Also visit the Adi Shankaracharya Samadhi located behind the temple.

Distance from Guptkashi to Sonprayag: Approx. 30-35 km (1-1.5 hours drive)
Sonprayag to Gaurikund: 5 km Gaurikund to Kedarnath: Trekking approx. 16-18 km.



Breakfast + Dinner | Stay



Gaurikund

Day 4 :Kedarnath-Gaurikund-Sonprayag-Guptkashi Return



Kedarnath Temple

Early morning, visit the temple for Abhishek at Kedarnath. After darshan and puja, return to the camp. Later, begin the 16 km return trek from Kedarnath to Gaurikund. Vehicles will be waiting at Gaurikund to drive you back to the hotel.

Distance from Sonprayag to Guptkashi: Approx. 30-35 km

Travel Time (Sonprayag to Guptkashi): Approx. 1-1.5 hours



Breakfast + Dinner | Stay

Day 5 : Guptkashi to Haridwar

Early morning Drive downhill to Rishikesh, On arrival, visit Ram Jhula and Laxman Jhula, then continue to Haridwar.

Distance from Guptkashi to Haridwar : Approx. 210-220 km

Travel Time (Guptkashi to Haridwar): Approx. 7 to 9 hours



Breakfast + Dinner | Stay



Haridwar

Day 6 : Haridwar to Delhi

Drive back to Delhi. On arrival at Delhi, transfer to airport/railway station to catch the flight/train for onward destination.

Distance from Haridwar to Delhi : Approx 210 km

Travel Time (Haridwar to Delhi): Approx. 5 to 6 hours



Breakfast

As your Ek Dham Yatra ends in Delhi , May your heart carry peace, faith & divine grace
We await your next spiritual journey with us.

Hotel Accommodation:

Destination	Standard Category Hotels
Haridwar	Riverdale, Haridwar/Elgrovia hotel/SCH
Guptkashi	Sajwan Palace/Raibaar Resort Guptkashi/ SCH
Kedarnath	Shared Camps on Double/Triple/Quad Occupancy

Essentials Things




Prescribed Medicines
Yatra Parchi
Helicopter Tickets (if booked)
ID Proof
Trekking Shoes
Warm Clothes / Jacket
Mosquito Repeller
Mobile Charger & Power Bank
Water Bottle
Gloves
Raincoat / Umbrella
Luggage Policy
 • 1 Trolley Bag + 1 Hand Bag (per person)



Your Tour Package Includes



Accommodation on Double/Triple/Quad sharing basis in hotels in hotels mentioned or similar



Vehicle is not at disposal; meant only for transfers **and sightseeing** as per itinerary
AC will not work during hilly drives



Seats allotment in the vehicle is on first come, first serve basis at the venue irrespective of booking



Vehicles as per group size on sharing basis



Meals in hotels/Camps at all Dhams
(Breakfast & Dinner)



Per day 2 x 500 ml mineral water bottles to each guest



Service of professional Tour Manager
(15 passengers & above)



Service of professional Tour Manager
(15 passengers & above)

Package does not includes



Helicopter shuttle tickets to Kedarnath
not included in the package



Pony & Palki charges
for travel to Kedarnath



Lunches during the tour
only breakfast & dinner are included



Any optional trips other than specified in the itinerary
including en-route additions



Personal equipment
like clothes, shoes, daypacks, personal medical kit, etc.



Any urgency expenses
arising due to situations beyond normal control



Any personal expenses room service, special orders, mineral water, alcoholic beverages, porterage, tips, phone calls, laundry, etc.



Extra excursions or sightseeing
apart from the specified itinerary



Camera fees & guide charges at monuments or sightseeing points



Any incidental or additional expenses
not mentioned in the inclusions

Terms & Conditions

- AC will not turn on while the vehicle at hills.
- Bus Seat numbers will be allotted on first cum first serve basis only. (Applicable on Group Departures only)
- Tour cost does not include at Railway station, porter charges, Doli, Helicopter ticket, Laundry, Telephone, Guide Charges, tips, entry fees if any, donations coolie at temples, extended stay or travelling due to any reason.
- Tour Company reserves the right to publish the passenger's photograph or group photograph which taken during the tour if wishes so.
- Type of transport vehicle can be changed in case short of passengers or low turnout of tourist our intention is not to disappoint tourist or cancellation of tour.
- To make the booking, a non-refundable deposit of Rs.10,000/- is required. Once this has been received confirmation of your booking (in form of an invoice) will be sent to you . The balance amount must be paid 15 days prior to the departure date of tours. Otherwise we may treat the booking as being cancelled by you.
- The price quoted in our brochure has been calculated at the rate prevailing at the time of printing this brochure. The company reserves the right to amend the prices published in the brochure.
- The customer has to bear the proportionate tour cost of extended stay or travelling due to extraneous circumstances.
- In unavoidable circumstances proposed hotels may be changed and that shall be acceptable to you. The company reserves the right to cancel at any time any/all the tours without assigning any reason. In such cases the company's responsibility shall be restricted to either refund without any compensation what so ever or keep the money for the next available tour if the customer so desires.
- Travels Company shall not be responsible for any injury, illness or death, terrorist attack, accident or for any damage or claims whatsoever arising from lose. The operator is not responsible for any criminal conduct by the third party.
- Cancellation must be made in writing.
- All disputes/ legal claims are subject to Dehradun jurisdiction only.

Thank you for choosing us for your sacred journey.

For any assistance or updates, feel free to Call or WhatsApp on the provided number 92055 90900



www.shubhdham.com

